

CI/SfB	(68.5)		
February 2012			



Intelligent security
and **fire protection**



SeceuroFire
Fire Protection





SeceuroFire Flame Curtain
Easily concealed, quickly enabled

SeceuroFire Flame Curtain

Intelligent automatic fire curtain from SWS UK – The flexible solution for a safe exit route.

Invisible when not in use, Flame Curtain is automatically activated in the event of a fire alarm or power failure. This ensures safety where it is needed without having to compromise on the aesthetics or design of a building.

The Flame Curtain, when lowered or deployed divides up large open spaces to slow down the spread of fire, allowing a safe exit. Flame Curtain is strong enough to contain a fire for up to 2 hours whilst still allowing a route of escape should this be required. This is achieved by simply lifting the bottom rail to create a gap large enough to go under.

Overview

- ✓ Helps stop the spread of fire
- ✓ 2 hour rating
- ✓ Invisible when not in use
- ✓ Auto-operation
- ✓ Gravity fail safe
- ✓ Complies with regulations



1 Invisible when not in use



2 Automatically activated



3 Takes seconds to deploy



4 Creates a fire barrier



1 Box housing unit
complete with
maintenance access

2 Curtain axle

3 End plate

4 Fire curtain

5 Guide rails

6 Bottom rail

Installation

The Flame Curtain's design allows both a face or reveal installation. The curtain must be fixed to appropriate fire protected masonry/concrete or steel supporting constructions that have a fire resistance of at least the period required.

Common Applications

- No compromise on design in large open plan offices
- Contain fire to create a safe escape route
- Fire protection over windows
- Contain area in a building e.g. restaurant/cafe area in a school/department store
- Greater protection on doors
- Contain fire within a lift
- Boundary protection to stop fire spreading to other premises e.g. shopping centre

Intelligent Features

Flame Curtain Specifications

- Testing & Standards
- Tested and approved by Exova Warringtonfire
- BS476: Part 22 1987
- BSEN1634-1:2008
- 2 Hour Fire Rating

Curtain

- Stainless Steel wire reinforced glass fabric intended for applications exposed to high temperatures
- Curtain fabric weight 0.69 kg/m²
- Grey Finish

Bottom rail

- T Section 40 mm High x 55 mm Deep

Guide Rails

100 mm Wide x 60 mm Deep double sections which can be reveal or face fitted. Specify at time of order. Designed to retain the fabric curtain during fire conditions. The guide rails expand towards the shutters box during fire conditions.

Shutterbox

Two piece galvanised steel powder coated white as standard. Other RAL colours available. Only 200 mm wide x 220 mm high. Supplied in sleeved sections to allow for expansion in fire conditions.

Finish

Galvanised steel powder coated white as standard. Other RAL colours available at extra cost.

Motor

24 V DC Tubular Motor. This product is not designed for frequent use and should remain open unless activated. The motor operates under mains supply in normal use. Battery backup is provided for power failure and in the event of complete battery discharge the brake is released and Flame Curtain closes automatically under gravity fail safe.

Controls

- Standard FC Control Panel
 - Alarm input
 - Emergency Override input for emergency escape switch
 - Audio Visual output
 - 24 V Battery backup
- The FC PLUS control panel also includes
 - Split drop curtain to retain smoke & allow emergency escape
 - Safety device inputs

Installation

Face or reveal fit to masonry, concrete or fire protected steel with at least the fire resistance rating of the product being fitted.

Technical Drawings

Full technical drawings available.



SeceuroFire Flame Shutter
Fire resistant and secure



SeceuroFire Flame Shutter
Minimise critical downtime

SeceuroFire Flame Shutter

One, two or four hour rating options available.

Flame Shutter is an electrically operated vertical fire shutter, consisting of a steel slatted curtain and galvanised steel box assembly and guide rails. The box, curtain, guide rails and bottom rail can be powder coated as an optional extra.

This product is designed to be a security barrier during normal use and to be closed automatically during a test or an emergency situation. In the event of receiving a fire alarm signal the barrier will perform a powered descent to create a fire resistant barrier. In the event of power failure Flame Shutter will close using the battery backup feature.

Flame Shutters design allows for both face or reveal installations.

Available in three integrity ratings:

Flame Shutter 60
Flame Shutter 120
Flame Shutter 240

Approved standards

The fire resistance performance of shutters to BS 476: Part 22: 1987. The fire resistance performance of shutters to BS EN 1634-1: 2008. The product was tested and approved by Exova Warringtonfire, report no. 312862



Product performance

This product is uniquely capable of providing specifiers with a choice of Flame Shutter 60, 120, or 240 minutes integrity performance in accordance with the standards mentioned above.



Size limitations

Minimum width: 800 mm Minimum height: 800 mm
Maximum width: 7000 mm Maximum height: 4600 mm

Sizes can vary according to integrity rating and larger sizes require a hood support bracket. Please check for confirmation. Maximum sizes can vary according to integrity rating.



SeceuroFire Flame Shutter
Easy to install, requiring minimal room

Intelligent Features

Flame Shutter Specifications

- Testing & Standards
- Tested and approved by Exova Warringtonfire
- BS476: Part 22 1987
- BSEN1634-1:2008
- Available in 1,2 and 4 hour rating

Curtain

- A single skin 75 mm scrolled or 50 mm flat galvanised steel slat
- Weight: 50 mm flat slat 10 kg/m²
Weight: 75 mm scrolled slat 10 – 16.5 kg/m² dependent upon the size of the curtain and integrity rating
- The product is available galvanised as standard or powder coated to RAL or BS colour at extra cost

Bottom rail

- T Sectioned steel bottom slat 49 mm high x 74 mm deep

Guide Rails

3 mm thick galvanised steel channels 50 mm or 65 mm deep, depending upon shutter width mounted on steel angles for fixing. Available for face or reveal installations. Specify on order.

Shutterbox

Galvanised steel endplates welded to the top of the guide assembly, in a flag arrangement with a two piece box assembly. Boxes are supplied in sleeved sections to allow for expansion in 250 mm, 300 mm and 350 mm sizes depending upon shutter height.

Axles

101.6 mm (1.6 mm), 101.6 mm (3.2 mm) 5", 5 1/2" or 6 5/8" round steel barrels are used depending on the product size.

Finish

Galvanised as standard or powder coated to RAL or BS colours at extra cost.

Motor

The fire curtain is powered using a 240 V AC tubular motor which is supplied as standard with a 2.5 m 4 core cable.

Controls

- FS control panel with separate battery backup
- Fire alarm interface relay with separate battery back up

Optional extras:

Localised sensors such as smoke and heat detectors, a range of audio visual devices and emergency retract switches can be connected to the panels using a 24 V DC supply from the panel.

- Key switch
- Manual over ride

Installation

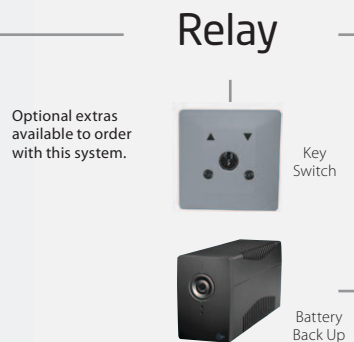
Face or reveal fit to masonry, concrete or fire protected steel with at least the fire resistance rating of the product being fitted.

Technical Drawings

Full technical drawings available.



SeceuroFire Flame Shutter
A full range of RAL colours available

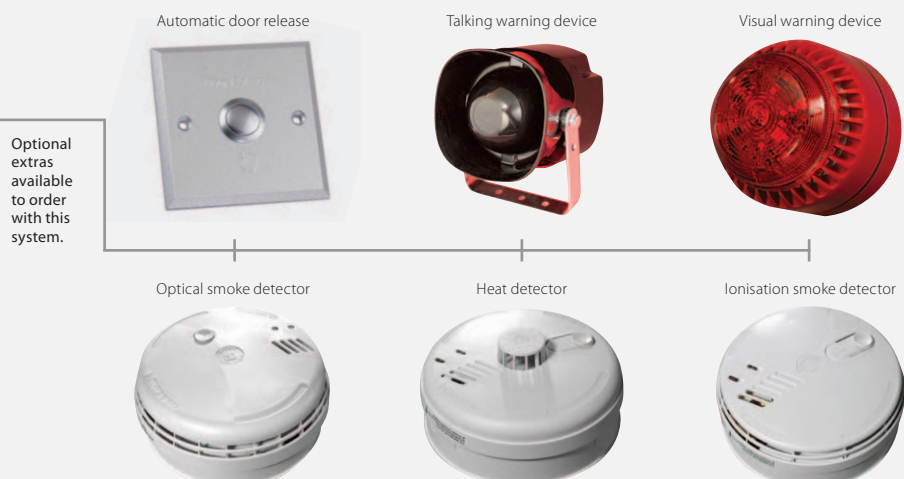
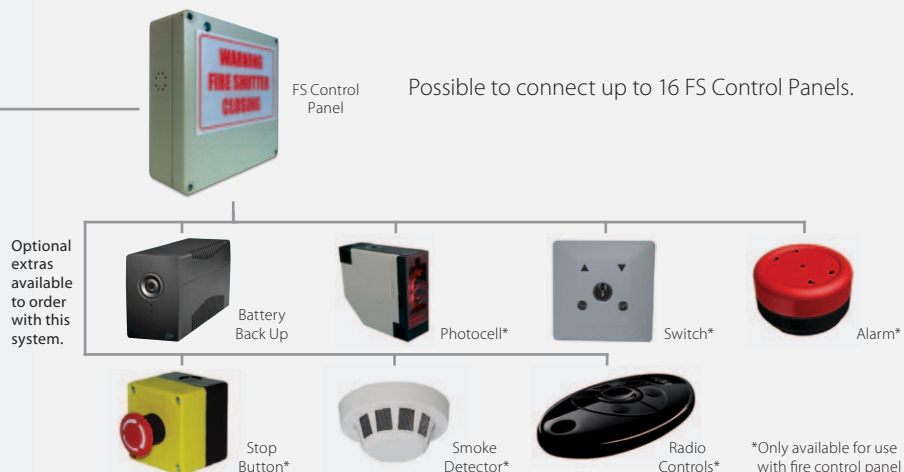
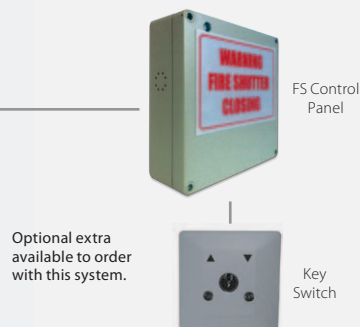


Control Options

Maintenance Recommendations

There is a requirement under The Regulatory Reform (Fire Safety) Order 2005 for companies to ensure fire safety equipment is maintained and a record kept.

- **Weekly:** Check all the system for correct operation
- **6 Months:** Inspections and test of the systems by a competent engineer
- **Annually:** Full inspections and test of the systems by a competent engineer, clean self-contained detectors and check or replace batteries



Other Products You Might Like



SeceuroShield Shutters

Although often overlooked securing your property provides an instant peace of mind by protecting the things that are important to you, whether that's your home and family or your business and consequently your livelihood. With the SeceuroShield range of made to measure products you have an effective answer to the growing need for protection from vandalism and burglary. The range has been engineered to allow simple integration with any building; bolstering security and deterring would be intruders. With so much choice, choosing a security product that most suits your needs can seem like a daunting task but the SeceuroShield range of industry leading products aim to offer something to suit all needs and are manufactured, supplied and installed by industry experts who can offer advice and guidance from your initial enquiry through to installation and after care.



SeceuroGuard Retractable Security Gates

Elegant good looks with a heart of steel – the SeceuroGuard retractable security gate system combines a classic appearance with a high level of protection, ideal for the home or workplace. Available in the standard SeceuroGuard 1000 or the Secured by Design, LPCB approved SeceuroGuard 1001 our highest level security gate. Designed to keep intruders out while letting maximum light in, they are perfect for vulnerable ground floor doors and windows.



SeceuroDoor Industrial Doors

The SeceuroDoor range of industrial doors provides a perfect solution for properties in need of a large automated door solution. Our steel shutters are available in the largest possible range of sizes with motor styles to suit the operation whether this be a standard warehouse style setting or a car park scenario where the door will be opened and closed on a constant basis. With expert advice and guidance is on hand from initial enquiry, though to installation and ongoing aftercare and service recommendations the SeceuroDoor range takes the hassle out of purchasing an industrial door.



Your SeceuroFire Checklist

Remember, only SeceuroFire offers all of the following:

✓ **A name you can trust**

When buying a SeceuroFire product you can be reassured by the values behind the name. SWS UK is an ISO 9001:2000 assessed company. SWS UK is a subsidiary of CRH plc, a UK FTSE100 company.

✓ **A perfect fit**

With every SeceuroFire product made to measure we can meet your design needs.

✓ **Manufactured in the UK**

Using the latest machinery and equipment, all SeceuroFire products are proudly manufactured and assembled in the UK.

✓ **A solution for all fire protection requirements**

A 1, 2 and 4 hour fire shutter range plus a 2 hour fire curtain mean that you have the widest choice of solutions from one manufacturer.

✓ **Fully tested**

Conforming to UK and European standards for the property owners peace of mind.

✓ **Neat design**

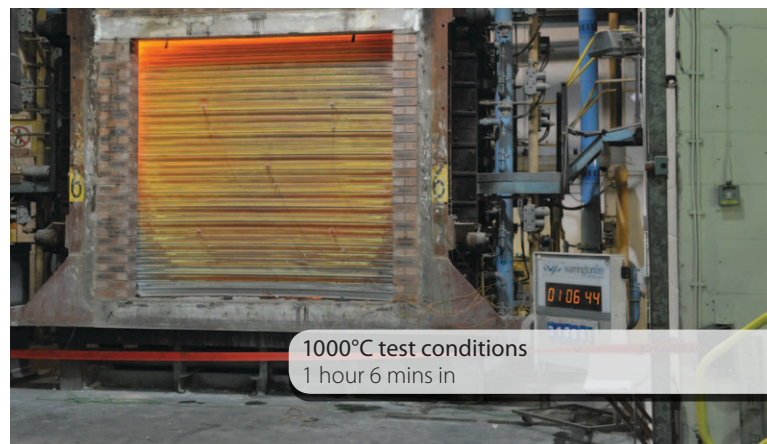
All motors are within the housing which is available in a range of sizes to minimise space requirements.

✓ **Local supply and installation**

A national network of trained installers.

Product Testing

Both the Flame Curtain and the Flame Shutter were tested and assessed by Exova Warringtonfire. The product is fitted on the furnace side replicating the most severe condition and the temperature of the furnace is increased to 1000°C at a rate defined by the product standards.



Peace-of-Mind Warranties

All SeceuroFire products are guaranteed against defect of material or workmanship by SWS UK, subject to correct installation, maintenance and operation, for a period of 12 months from the date of purchase.

